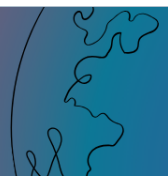




ETHERNET TO FIBER MEDIA CONVERTER

MODEL DDMC N



SYNOPSIS

- MODEL DDMC PROVIDES A COST-EFFECTIVE PLUG-AND-PLAY SOLUTION FOR LONG-RANGE 10BASE-T OR 100BASE-TX ETHERNET EXTENSIONS.
- IT HAS AN ADDED BENEFIT OF 10/100 AUTO-NEGOTIATION, MAKING IT THE PERFECT CHOICE WHEN PLANNING FUTURE UPGRADES OF 10BASE-T NETWORKS. BUILT-IN AUTO-SENSING CAPABILITIES ENABLE FULL OR HALF-DUPLEX ETHERNET OPERATION WITH NO CONFIGURATION REQUIRED.
- MDI/MDI-X, 10M/100M AUTO NEGOTIATION
- SUPPORTS FULL-DUPLEX / HALF-DUPLEX, POINT-TO-POINT TRANSFER
- LINK FAULT PASS THROUGH (LFPT)
- POWER SUPPLY INTERNAL 110V AC OR 230V AC. OTHER AC / DC VOLTAGES AVAILABLE ON REQUEST

SPECIFICATIONS

ETHERNET PORT

Standard	EEE802.3 10Base-T, IEEE 802.3u 100BaseT(X) and 100Base-FX
	IEEE802.3x Full Duplex and Flow Control
RJ45 port rate	10/100Mbps Auto negotiation Forced 10 or 100 Mbps through DIP on board
Ethernet transmission distance	100M
RJ45 port connector	RJ45
Isolation	Magnetic, 1.5KV

FIBER PORT & CABLE

Optic port rate	100Mbps
Fiber transmission	20 to 120Km (single-mode), 2Km (multi-mode)
Optic port connector	SC, ST
Single-mode	8.3/125, 8.7/125, 9/125 or 10/125µm
Multi-mode	50/125, 62.5/125µm



DDMC SERIES

Wavelength	1310nm (2Km, 20km, 25Km, 40Km)1550nm (40Km to 100 Km)
Tx Power	- 7 to -12dBm @ 1310nm
Rx Sensitivity	≥ -36dBm @ 1310nm
Power Budget	24 to 29 dB

INDICATIONS

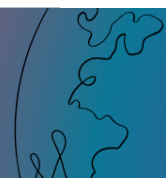
6 LED's	Power Fiber Link Ethernet Link Full / Half Duplex Ethernet 10 / 100 Mbps Fiber 100 Mbps
----------------	--

POWER SUPPLY

Internal	230V AC	Range 110 to 265 VAC 3 pin Terminal block
	24, 48, 110, 220V DC	Range +/- 10% 3 pin Terminal block
Power Consumption	< 4W	

MECHANICALS

Dimension	115 * 34 * 97mm (H×W×D) without DIN Clamp & Connectors
Mounting / Enclosure	DIN Rail
Weight	260gm



ENVIRONMENT

Operating Temperature	-10 deg to 70 deg Celsius
Storage temperature	-20 deg to 70 deg Celsius
Relative Humidity	5% to 95% Non-Condensing
MTBP	> 300,000hrs

ORDERING CODE

DDMC M/SXXX SC/ST Y ZZZ N

DDMC	Base Model	
M/SXXX	M	Multimode
	S	Single Mode
		XXX = 20, 40, 60, 80, 100 Kms for Single Mode
SC / ST	SC	SC Connector
	ST	ST Connector
Y	A	AC
	D	DC
ZZZ	230 for AC 24, 48, 110, 220 for DC	
N	Fixed	

